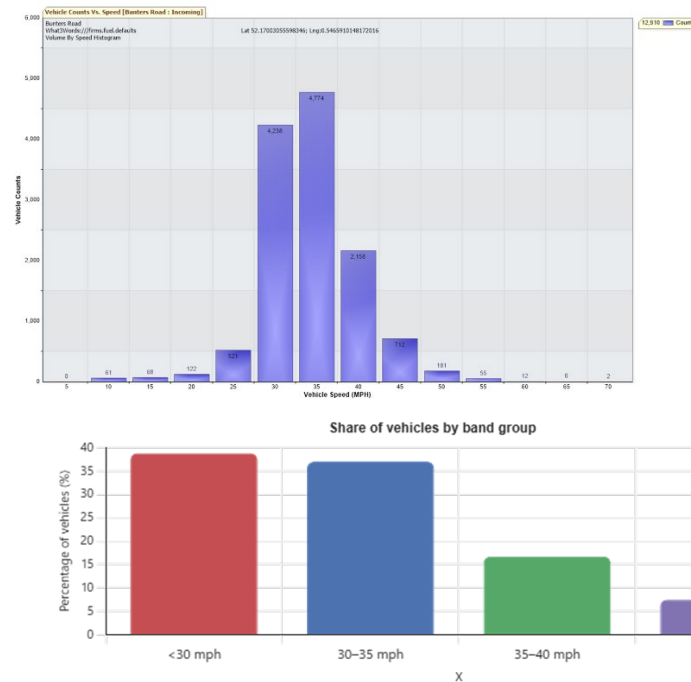


Vehicle Activated Sign Results – Bunters Road

1st – 14th February 2026

Total vehicle count: 12,910



Do most crashes happen on high-speed roads?

No. Approximately two-thirds of all crashes in which people are killed or injured happen on roads with a speed limit of 30mph or less.

And in 2018, the majority of the 456 pedestrian fatalities and 5,782 serious casualties occurred on built-up roads. Cyclists are also vulnerable in built-up areas, with more than half of cyclist deaths (62 of 99) and serious cyclist casualties (3,402 of 3,707) occurring on built-up roads.

Did you know?

If you hit a pedestrian they have a much greater chance of surviving if your speed is lower¹.
If you hit a pedestrian:

- at 40 mph there is a 90 percent chance they will be killed.
- at 35 mph there is a 50 percent chance they will be killed.
- at 30 mph there is a 20 percent chance they will be killed.
- at 20 mph there is a 2.5 percent chance they will be killed.

¹ <https://churchoverparish.gov.uk/wp-content/uploads/2022/12/Speeding.pdf> 26.02.17

The tables below distribution of average speeds over time bands for each week:

